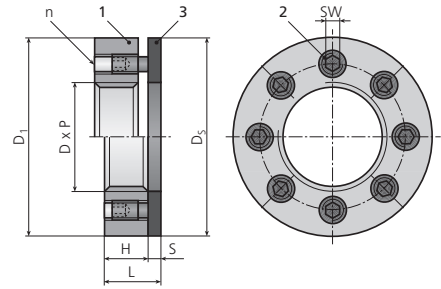


# SJ

## Jamnut tensioner standard low-profile

SJ jamnuts are used for applications involving limited headroom or limited thread engagement.

Components:  
1 Nut body  
2 Jackbolts  
3 Hardened washer



Imperial Part number	Size			Nut body		Jackbolt		Hardened washer		Height tot L [in]	Weight est [Lb]	Preload* nom F [LBf]	Torque* nom M [Lbft]	Preload capacity* max [LBf]	
	Thread D [in]	Available TPI P <sub>1</sub> P <sub>2</sub> P <sub>3</sub>			D <sub>1</sub> [in]	H [in]	n	SW [in]	D <sub>2</sub> [in]						S [in]
SJ-075-.../W	3/4	10	16	-	1.70	0.55	6	5/32	1.63	0.13	0.68	0.34	16,300	9	21,700
SJ-087-.../W	7/8	9	14	-	1.84	0.60	8	5/32	1.75	0.13	0.73	0.40	21,700	9	28,900
SJ-100-.../W	1	8	12	14	1.95	0.60	8	5/32	2.00	0.19	0.79	0.49	21,700	9	28,900
SJ-112-.../W	1-1/8	7	8	12	2.20	0.80	8	3/16	2.13	0.19	0.99	0.67	30,000	15	40,000
SJ-125-.../W	1-1/4	7	8	12	2.34	0.80	8	3/16	2.38	0.19	0.99	0.85	30,000	15	40,000
SJ-137-.../W	1-3/8	6	8	12	2.45	0.92	10	3/16	2.50	0.19	1.11	0.96	37,500	15	50,000
SJ-150-.../W	1-1/2	6	8	12	2.95	1.10	8	1/4	2.75	0.19	1.29	1.67	56,900	37	75,900
SJ-162-.../W	1-5/8	6	8	12	3.20	1.10	10	1/4	2.88	0.19	1.29	1.92	71,200	37	94,900
SJ-175-.../W	1-3/4	5	8	12	3.45	1.10	12	1/4	3.45	0.25	1.35	2.33	85,400	37	113,900
SJ-187-.../W	1-7/8	6	8	12	3.59	1.10	12	1/4	3.59	0.25	1.35	2.57	85,400	37	113,900
SJ-200-.../W	2	4.5	8	12	3.95	1.30	8	5/16	3.50	0.25	1.55	3.63	91,400	75	121,900
SJ-225-.../W	2-1/4	4.5	8	12	4.45	1.30	12	5/16	4.00	0.25	1.55	4.57	137,100	75	182,800
SJ-250-.../W	2-1/2	4	8	12	4.70	1.30	12	5/16	4.50	0.31	1.61	5.25	137,100	75	182,800
SJ-275-.../W	2-3/4	4	8	12	5.45	1.50	12	3/8	4.75	0.31	1.81	7.65	165,800	108	221,100
SJ-300-.../W	3	4	6	8	5.95	1.90	12	1/2	5.25	0.38	2.28	12.55	226,300	179	301,700
SJ-325-.../W	3-1/4	4	6	8	6.20	1.90	12	1/2	5.50	0.38	2.28	12.10	226,300	179	301,700
SJ-350-.../W	3-1/2	4	6	8	6.45	1.90	12	1/2	5.75	0.38	2.28	12.72	226,300	179	301,700
SJ-375-.../W	3-3/4	4	6	8	6.70	2.00	12	1/2	6.00	0.38	2.38	15.02	226,300	179	301,700
SJ-400-.../W	4	4	6	8	6.95	2.00	12	1/2	6.65	0.38	2.38	15.89	226,300	179	301,700
SJ-425-.../W	4-1/4	4	6	8	7.20	2.30	16	1/2	6.90	0.38	2.68	16.63	301,700	179	402,200
SJ-450-.../W	4-1/2	4	6	8	7.45	2.30	16	1/2	7.40	0.38	2.68	19.07	301,700	179	402,200
SJ-475-.../W	4-3/4	4	6	8	7.70	2.30	16	1/2	7.90	0.38	2.68	20.63	301,700	179	402,200
SJ-500-.../W	5	4	6	8	7.95	2.30	16	1/2	7.90	0.38	2.68	21.19	301,700	179	402,200
SJ-525-.../W	5-1/4	4	6	8	8.70	2.40	16	9/16	8.40	0.50	2.90	28.11	396,700	269	529,000
SJ-550-.../W	5-1/2	4	6	8	8.95	2.40	16	9/16	8.40	0.50	2.90	28.75	396,700	269	529,000
SJ-575-.../W	5-3/4	4	6	8	9.20	2.40	16	9/16	9.40	0.50	2.90	31.41	396,700	269	529,000
SJ-600-.../W	6	4	6	8	9.45	2.40	16	9/16	9.40	0.50	2.90	31.38	396,700	269	529,000

\* All preload and torque values are provided for general reference. Applied preload plus additional bolt load from service should not exceed the maximum bolt or stud capacity. Contact your local Nord-Lock sales office for assistance in determining proper preload and torque settings for your application.  
- Other sizes, thread pitches or thread per inch (TPI) may be available.  
- Dimensions listed are representative.

©Copyright 2018 Nord-Lock Group. NORD-LOCK, SUPERBOLT, BOLTIGHT and EXPANDER SYSTEM are trademarks owned by different companies within the Nord-Lock Group. All other logos, trademarks, registered trademarks or service marks used herein are the property of the Nord-Lock Group. All rights reserved.