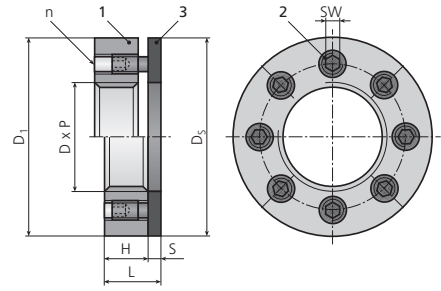


SJ

Jamnut tensioner standard low-profile

SJ jamnuts are used for applications involving limited headroom or limited thread engagement.

Components:
1 Nut body
2 Jackbolts
3 Hardened washer



Metric Part number	Size			Nut body		Jackbolt		Hardened washer		Height tot L [mm]	Weight est [kg]	Preload* nom F [kN]	Torque* nom M [Nm]	Preload capacity* max [kN]	
	Thread D [mm]	Available pitch P ₁ P ₂ P ₃ [mm]			D ₁ [mm]	H [mm]	n	SW [mm]	D ₂ [mm]						S [mm]
SJ-M20x.../W	M20	2.5	1.5	1	43	15	6	4	43	4	19	0.15	67	11	91
SJ-M22x.../W	M22	2.5	1.5	1	47	16	8	4	45	5	21	0.20	81	10	105
SJ-M24x.../W	M24	3	2	1.5	50	16	8	4	48	5	21	0.20	89	11	120
SJ-M27x.../W	M27	3	2	1.5	53	16	10	4	50	5	21	0.25	100	10	130
SJ-M30x.../W	M30	3.5	2	1.5	60	21	8	5	59	5	26	0.40	135	21	180
SJ-M33x.../W	M33	3.5	2	1.5	63	22	10	5	63	5	27	0.40	155	19	200
SJ-M36x.../W	M36	4	3	1.5	69	28	8	6	69	5	33	0.65	190	35	245
SJ-M39x.../W	M39	4	3	1.5	75	28	10	6	75	5	33	0.80	255	38	335
SJ-M42x.../W	M42	4.5	3	1.5	81	28	12	6	78	5	33	0.90	315	39	420
SJ-M45x.../W	M45	4.5	3	1.5	88	28	12	6	81	6	34	1.00	315	39	420
SJ-M48x.../W	M48	5	3	1.5	101	31	8	8	94	6	37	1.65	380	94	500
SJ-M52x.../W	M52	5	3	2	101	33	8	8	94	6	39	1.65	380	94	500
SJ-M56x.../W	M56	5.5	4	2	113	33	12	8	100	6	39	2.05	570	94	760
SJ-M60x.../W	M60	5.5	4	2	117	33	12	8	106	6	39	2.15	570	94	760
SJ-M64x.../W	M64	6	4	2	119	33	12	8	120	8	41	2.45	570	94	760
SJ-M68x.../W	M68	6	4	2	138	38	12	10	125	8	46	3.60	710	145	950
SJ-M72x.../W	M72	6	4	2	151	38	12	10	125	8	46	4.50	910	185	1200
SJ-M76x.../W	M76	6	4	2	151	38	12	10	138	8	46	4.35	860	175	1130
SJ-M80x.../W	M80	6	4	2	158	38	12	10	145	10	48	4.95	910	185	1200
SJ-M90x.../W	M90	6	4	2	170	51	12	12	160	10	61	7.20	1160	280	1530
SJ-M100x.../W	M100	6	4	2	177	53	12	12	180	10	63	7.75	1160	280	1530
SJ-M110x.../W	M110	6	4	2	190	59	16	12	190	10	69	9.25	1550	280	2040
SJ-M120x.../W	M120	6	4	2	202	59	16	12	202	10	69	10.25	1550	280	2040
SJ-M125x.../W	M125	6	4	2	205	59	16	12	202	10	69	10.25	1550	280	2040
SJ-M130x.../W	M130	6	4	2	210	59	16	12	202	10	69	10.50	1550	280	2040
SJ-M140x.../W	M140	6	4	2	221	59	16	12	215	12	71	11.75	1550	280	2040
SJ-M150x.../W	M150	6	4	2	230	59	16	12	225	12	71	12.25	1550	280	2040
SJ-M160x.../W	M160	6	4	-	240	59	16	12	240	12	71	13.25	1550	280	2040

* All preload and torque values are provided for general reference. Applied preload plus additional bolt load from service should not exceed the maximum bolt or stud capacity. Contact your local Nord-Lock sales office for assistance in determining proper preload and torque settings for your application.
- Other sizes, thread pitches or thread per inch (TPI) may be available.
- Dimensions listed are representative.